



1



City of Oceanside

- 3rd Largest City in San Diego County
- Coastal City located 35 miles north of San Diego
- Population 180K
- 44,000 service connections
- Includes residential, commercial, institutional, and agriculture customers
- 50% local water supply goal

2

City of Oceanside - Water



Weese Filtration Plant – 25 MGD

- Raw Water Treatment
- SDCWA Treated Water

Mission Basin Groundwater Purification Facility – 6.4 MGD

- 8 Production Wells
- 27 Observation Wells

Distribution System

- ~600 miles of pipeline
- 69 Pressure Regulating Stations
- 12 Reservoirs

Water Supply Challenges

- Imported water challenges
- Declining groundwater



3

A *New* Source of Water



- ✓ **DIVERSIFY** our water supply
- ✓ **REDUCE** reliance on imported water
- ✓ **IMPROVE** groundwater resources
- ✓ **CREATE** a local and sustainable water source for Oceanside



4

Construction Overview

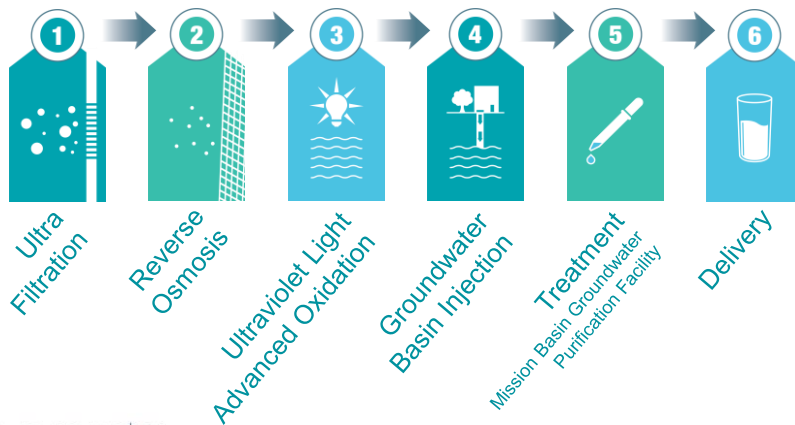


- AWPf NTP January 2020
- River Crossing Conveyance NTP April 2020
- Neighborhood Conveyance & Well Vaults NTP September 2020
- Well Drilling NTP October 2020



5

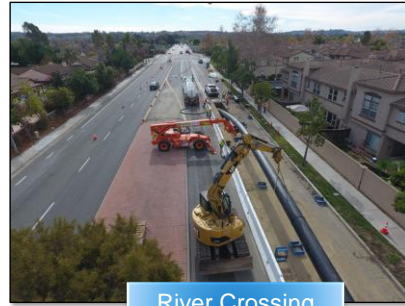
How the Process Works



6

Challenges

- Aggressive construction schedule
- Senate Bill 606 – Urban Water Use Objective Calculation
- Permitting
- New technologies
- Residential Well Drilling
- River Crossing
- Staff training and operations
- Startup/Commissioning



7

Conservation Impacts

- 20% of City's water supply
- Protects against drought
- Sustainable water source
- Urban Water Use Objective



8

Future Development

Several Capital Improvement Projects to increase local water supply

- La Salina WWTP Decommissioning and Sewer Centralization Project
- SLRWRF Upgrades
- Mission Basin Groundwater Purification Facility Upgrades
- RW Distribution Expansion
- AWPf Expansion

City continues to evaluate water rates at SDCWA and impacts to local supply projects.



9

Questions?



Lindsay Leahy
 Water Utilities Director
l Leahy@oceansideca.org
 (760) 435-5913



10