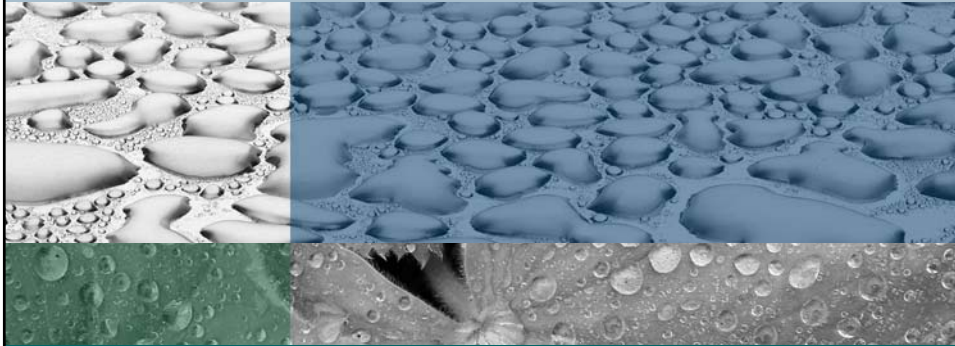


San Diego IRWMP Regional Advisory Committee Meeting



April 23, 2007

Agenda

- Introductions
- Updates
- Comments on Administrative Draft IRWMP
- Review of IRWM Plan Prioritization
- Request for Additional Information
- Approach to Funding Application Prioritization
- Public Comments

Agenda

- Introductions
- Updates
- Comments on Administrative Draft IRWMP
- Review of IRWM Plan Prioritization
- Request for Additional Information
- Approach to Funding Application Prioritization
- Public Comments

3

Agenda

- Introductions
- Updates
- Comments on Administrative Draft IRWMP
- Review of IRWM Plan Prioritization
- Request for Additional Information
- Approach to Funding Application Prioritization
- Public Comments

4

Agenda

- Introductions
- Updates
- **Comments on Administrative Draft IRWMP**
- Review of IRWM Plan Prioritization
- Request for Additional Information
- Approach to Funding Application Prioritization
- Public Comments

5



Summary of Comments Received

- Some projects are best captured under objectives that weren't included in integration
- All objectives should be incorporated into plan prioritization
- Use of CWP strategies shortchanges environmental and habitat projects
- Role of objectives in ranking/prioritization is unclear
- If scoring is based on strategies, why retain regional objectives if not used

6



Summary of Comments Received

- Lack of understanding of short term/long term priorities
- Original *Objective A: Sustainability* not clearly addressed in plan - need to include
- Should financing be part of prioritization (e.g., Lake Hodges Water Quality and Watershed Management Plan top ranked, but too expensive for this process)?
- What type of integration are we striving for (plan, project)?

7

RMC

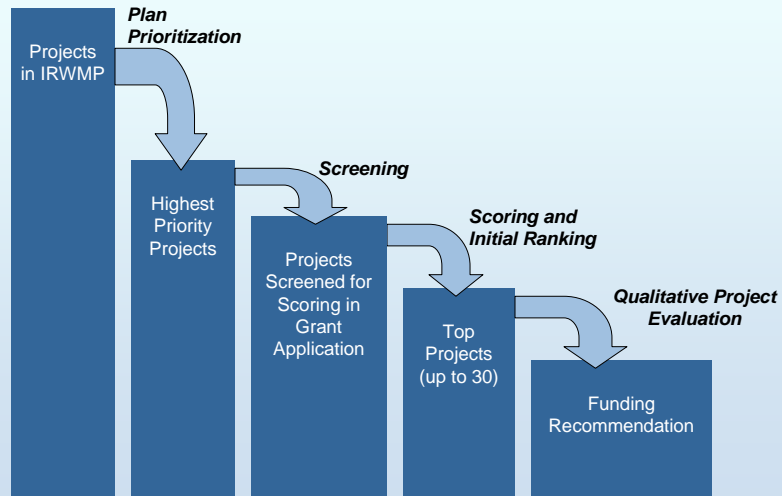
Agenda

- Introductions
- Updates
- Comments on Administrative Draft IRWMP
- Review of IRWM Plan Prioritization
- Request for Additional Information
- Approach to Funding Application Prioritization
- Public Comments

8

San Diego
Integrated Regional
Water Management

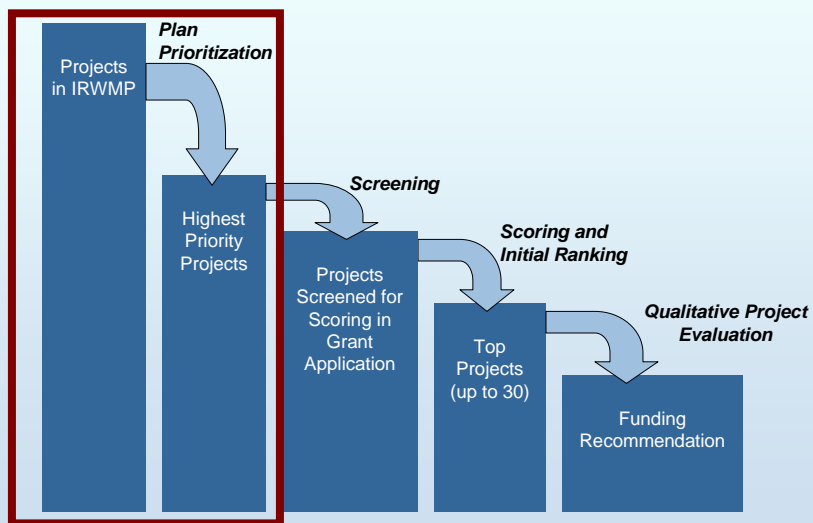
Multiple Levels of Prioritization



9

RMC

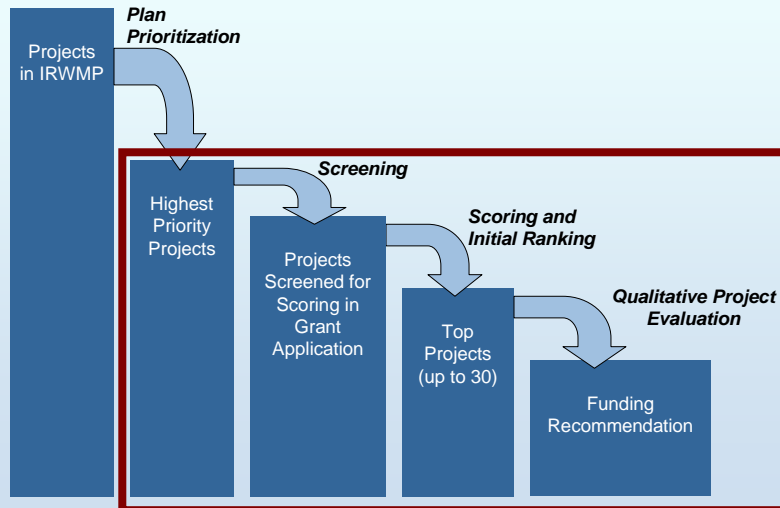
Plan Prioritization should be Inclusive and Flexible



10

RMC

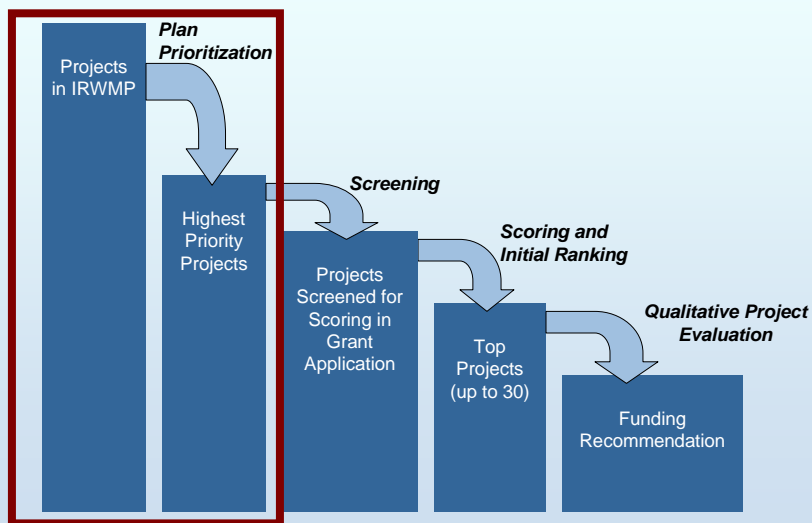
Funding Application Prioritization Identifies Projects for Funding Application



11

RMC

Plan Prioritization

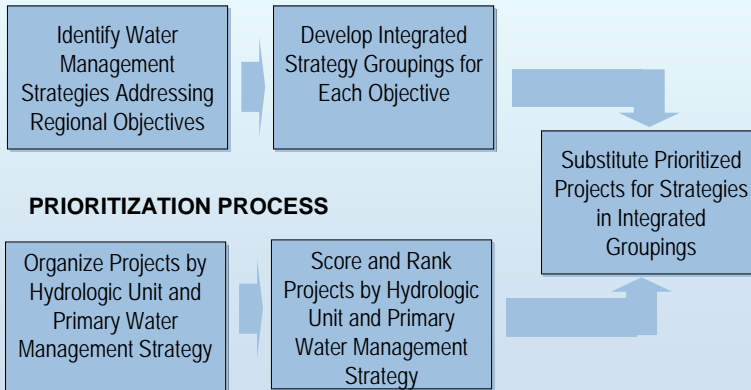


12

RMC

The Integration Process Builds on Integration & Replaces Strategies with Projects to Achieve Objectives

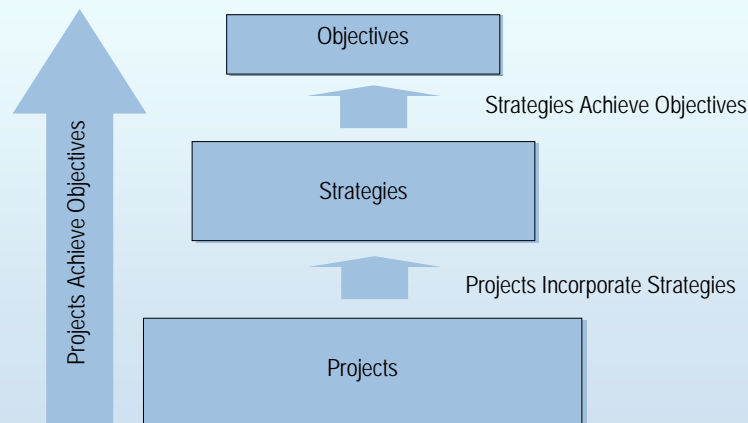
INTEGRATION PROCESS



13

RMC

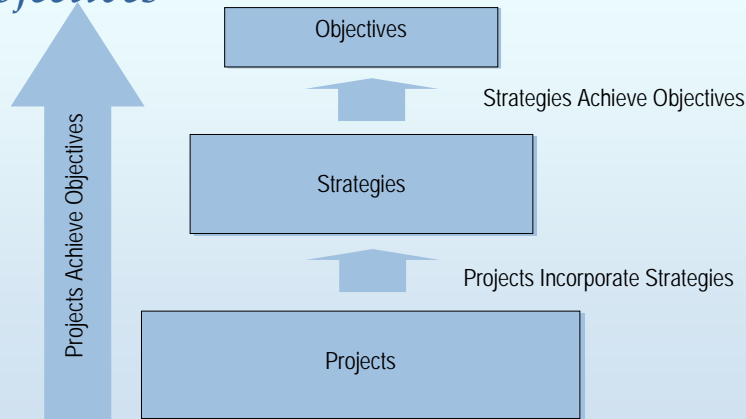
Plan Prioritization Builds on Integration to Identify Projects to Address Objectives



14

San Joaquin
Integrated Regional
Water Management

In Some Cases Projects are not Mapped to Strategies but are Directly Linked to Objectives



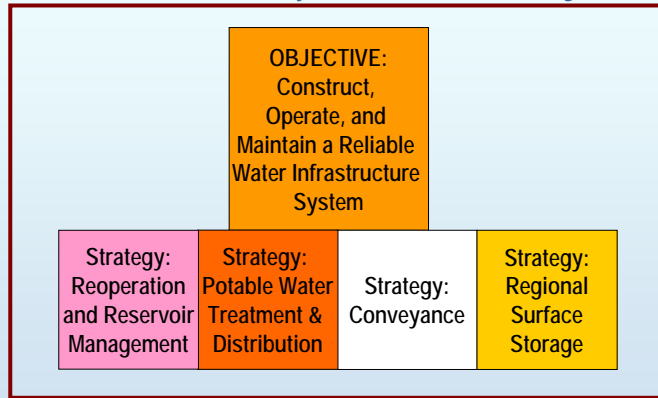
15

Rules for Prioritizing Projects under Strategies at the Plan Level

- The **most important** factors are ability to address **objectives** and **integration**
- Projects are ranked based on **number of strategies** employed
 - Projects receive 1 pt for every strategy incorporated

16

Example: Construct, Operate and Maintain a Reliable Water Infrastructure System



Integrated Strategy Grouping

17



Through Plan Prioritization, Projects are Mapped to Water Management Strategies

Project	Ag Land	Conveyance	Potable Water	Restoration	Ecosystem Management	Floodplain Management	Match quality to use	Pollution Prevention	Recycled Water	Regional Storage	Reoperation	Water Use Efficiency	Recreation	Water Planning	Watershed
Sewer Main Rehab		○						●							
New Water Main		○	●												
Water Main Rehab		○	●									○			
Recycled Water Distribution		○							●						
Dam Modification		○	●			○				○	○				
Habitat Improvements		○				●									
Conservation Survey												●			

18



Projects Are Linked to *Primary* Strategies

Project	Ag Land	Conveyance	Potable Water	Restoration	Ecosystem	Floodplain Management	Match quality to use	Pollution Prevention	Recycled Water	Regional Storage	Reoperation	Water Use Efficiency	Recreation	Water Planning	Watershed
Sewer Main Rehab		○						●							
New Water Main		○	●												
Water Main Rehab		○	●									○			
Recycled Water Distribution		○							●						
Dam Modification		○	●			○				○	○				
Habitat Improvements				●				○							○
Conservation Survey												●			

RMG

19

Projects Are Linked to *Secondary* Strategies

Project	Ag Land	Conveyance	Potable Water	Restoration	Ecosystem	Floodplain Management	Match quality to use	Pollution Prevention	Recycled Water	Regional Storage	Reoperation	Water Use Efficiency	Recreation	Water Planning	Watershed
Sewer Main Rehab		○						●							
New Water Main		○	●												
Water Main Rehab		○	●									○			
Recycled Water Distribution		○							●						
Dam Modification		○	●			○				○	○				
Habitat Improvements				●				○							○
Conservation Survey												●			

RMG

20

Projects Sharing a Primary Strategy in the Same Hydrologic Unit are Prioritized

Project	Ag Land	Conveyance	Potable Water	Restoration	Ecosystem	Floodplain Management	Match quality to use	Pollution Prevention	Recycled Water	Regional Storage	Reoperation	Water Use Efficiency	Water Recreation	Watershed Planning
Sewer Main Rehab		<input type="radio"/>						<input checked="" type="radio"/>						
New Water Main		<input type="radio"/>	<input checked="" type="radio"/>											
Water Main Rehab		<input type="radio"/>	<input checked="" type="radio"/>									<input type="radio"/>		
Recycled Water Distribution		<input type="radio"/>							<input checked="" type="radio"/>					
Dam Modification		<input type="radio"/>	<input checked="" type="radio"/>			<input type="radio"/>				<input type="radio"/>	<input type="radio"/>			
Habitat Improvements				<input checked="" type="radio"/>				<input type="radio"/>						<input type="radio"/>
Conservation Survey												<input checked="" type="radio"/>		

RMG

21

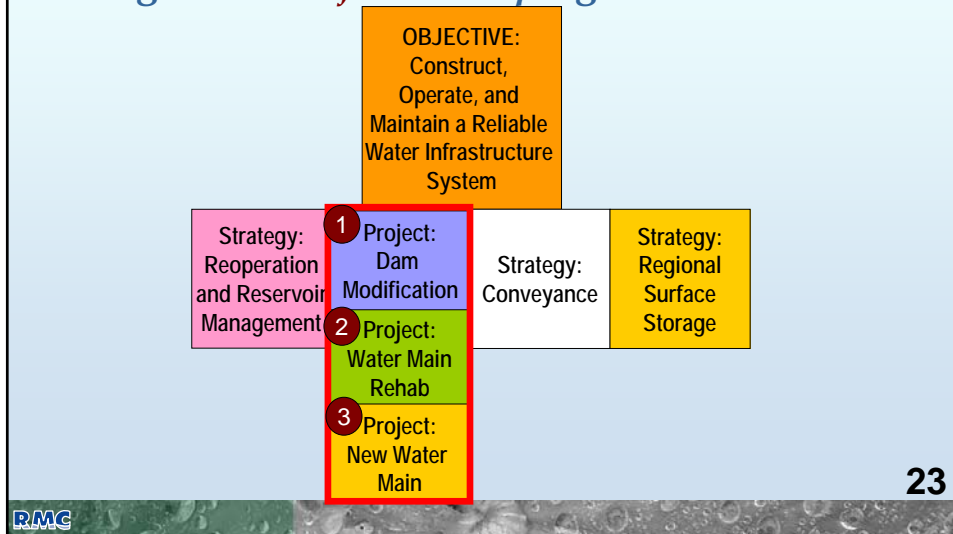
Prioritization Favors Integrated Projects

Project	Ag Land	Conveyance	Potable Water	Restoration	Floodplain Management	Match quality to use	Pollution Prevention	Recycled Water	Regional Storage	Reoperation	Water Use Efficiency	Water Recreation	Watershed Planning	SCORE
New Water Main		<input type="radio"/> (1)	<input checked="" type="radio"/> (1)										<input checked="" type="radio"/> 3	1
Water Main Rehab		<input type="radio"/> (1)	<input checked="" type="radio"/> (1)								<input type="radio"/> (1)		<input checked="" type="radio"/> 2	3
Dam Modification		<input type="radio"/> (1)	<input checked="" type="radio"/> (1)		<input type="radio"/> (1)				<input type="radio"/> (1)	<input type="radio"/> (1)			<input checked="" type="radio"/> 1	5

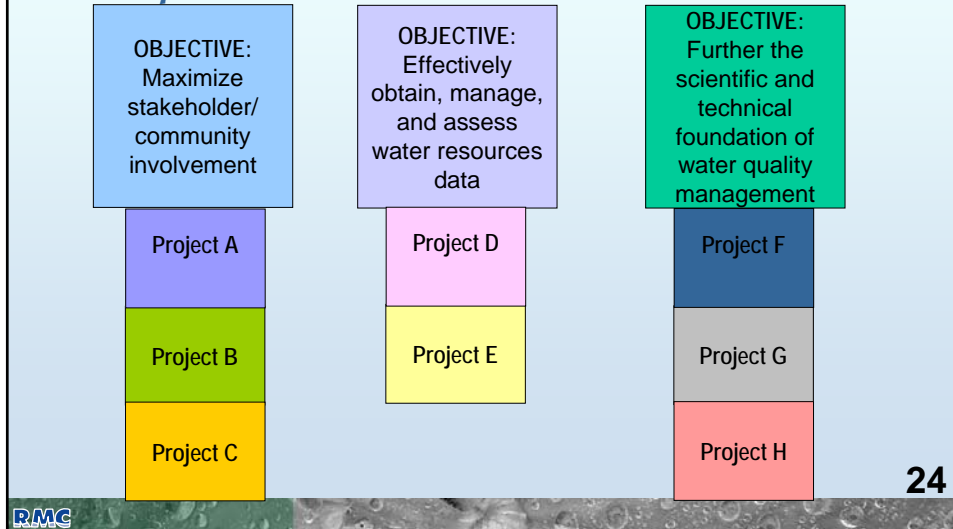
RMG

22

*Prioritized Projects Replace Strategies in Integrated **Strategy** Groupings forming Integrated **Project** Groupings*



Projects that Align with Objectives but not Water Management Strategies will be Grouped



Plan Prioritization Results in Lists of Projects for Each Objective and Hydrologic Unit

- Projects are not “lost” but are prioritized
- Highest priority projects identified
 - Top ranked projects in integrated project groupings
 - Projects associated directly with objectives
- Process is transparent and flexible

25

Agenda

- Introductions
- Updates
- Comments on Administrative Draft IRWMP
- Review of IRWM Plan Prioritization
- Request for Additional Information
- Approach to Funding Application Prioritization
- Public Comments

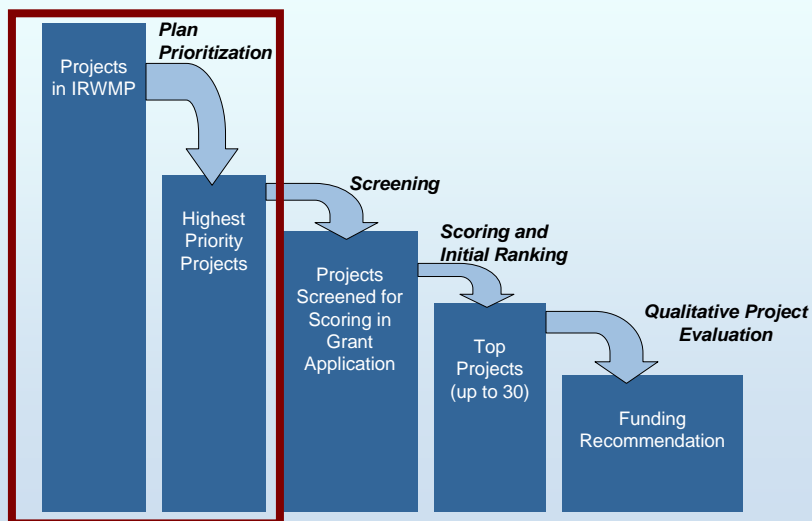
26

Agenda

- Introductions
- Updates
- Comments on Administrative Draft IRWMP
- Review of IRWM Plan Prioritization
- Request for Additional Information
- Approach to Funding Application Prioritization
- Public Comments

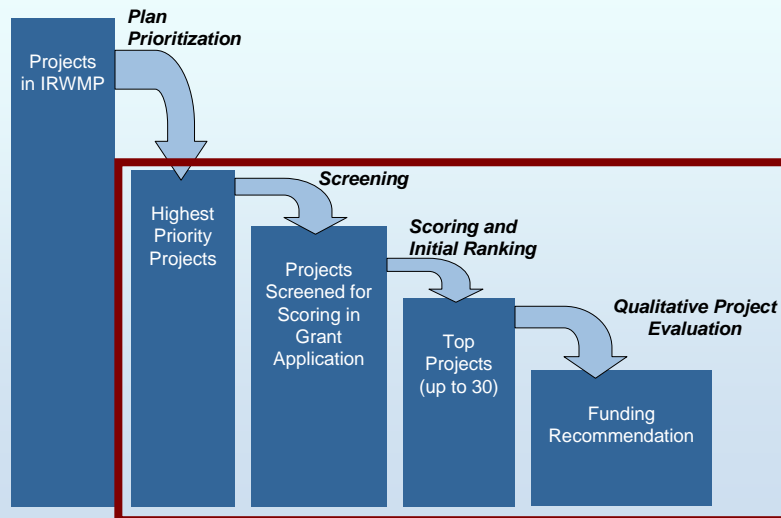
27

Plan Prioritization Establishes the Initial Pool of Projects for Funding



28

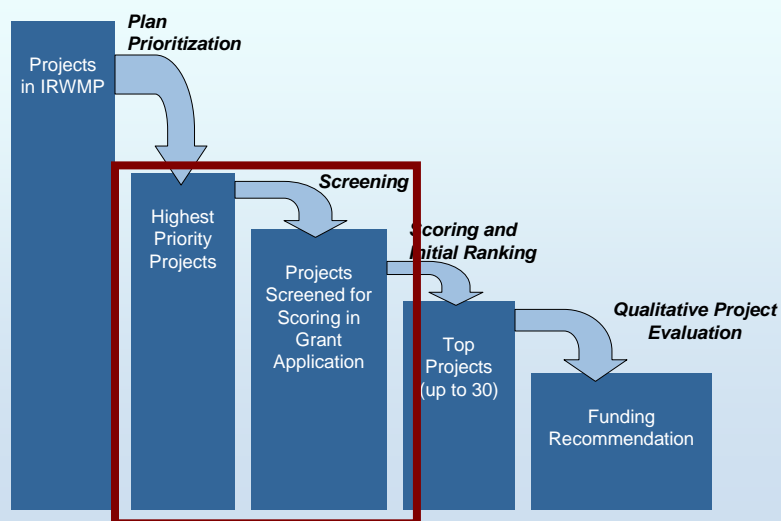
Funding Application Prioritization Further Reduces the Pool of High Priority Projects



29

RMC

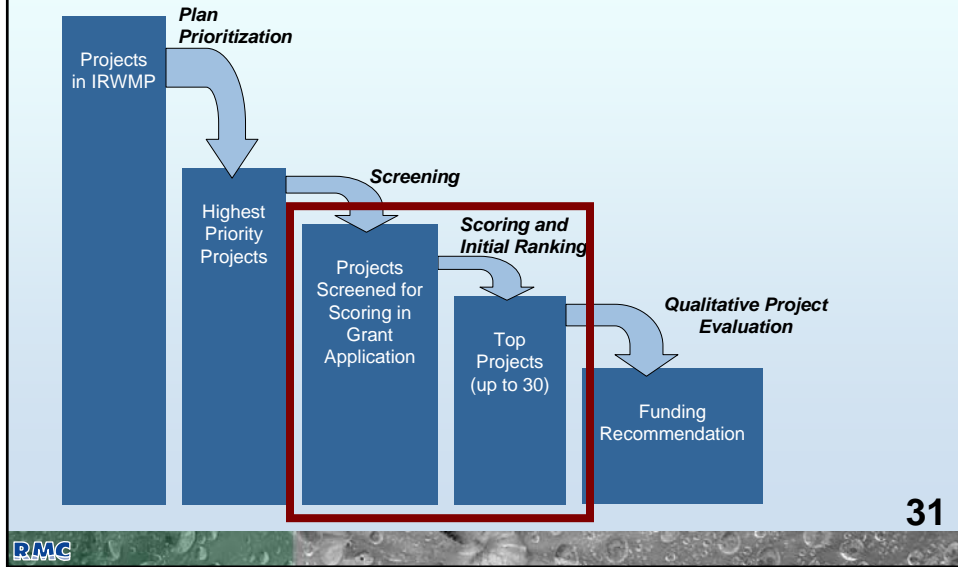
Highest Priority Projects are Screened using Objective Criteria



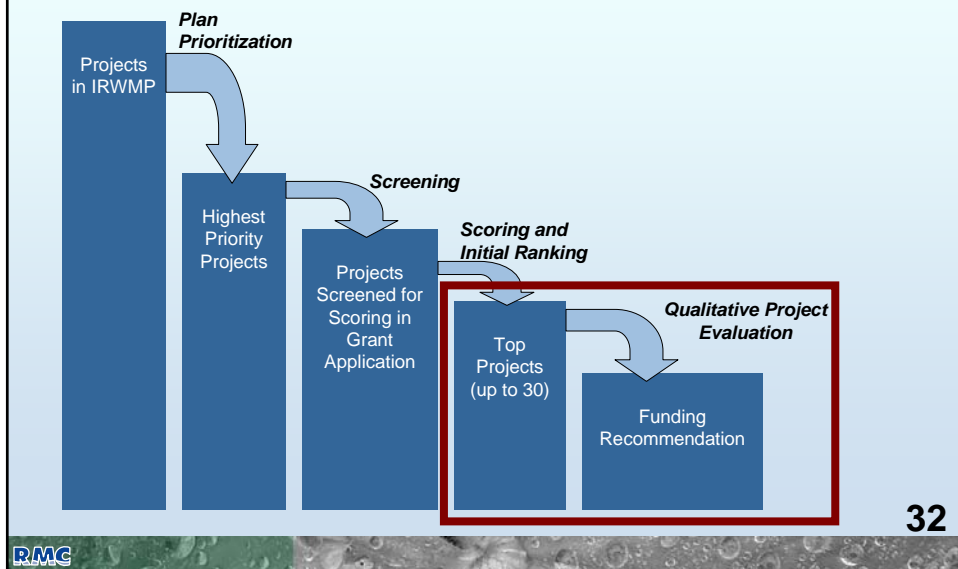
30

RMC

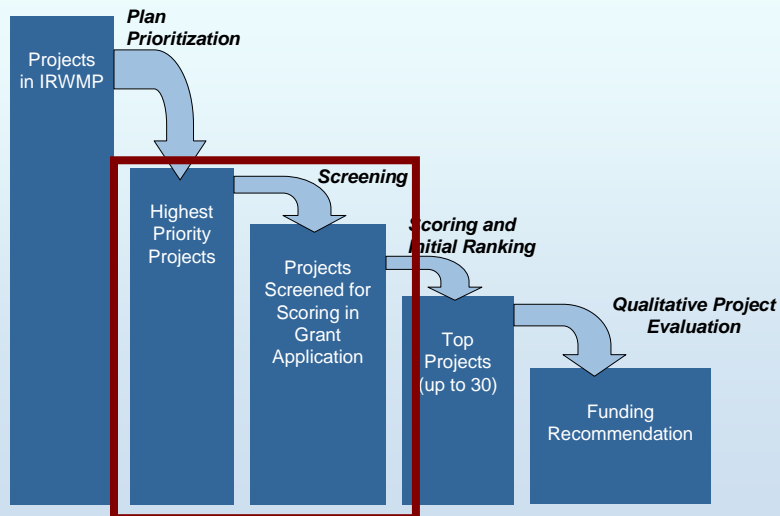
Screened Projects are Evaluated Further using Objective Criteria



Up to 30 Top-Ranked Projects are Reviewed Qualitatively by a RAC Workgroup



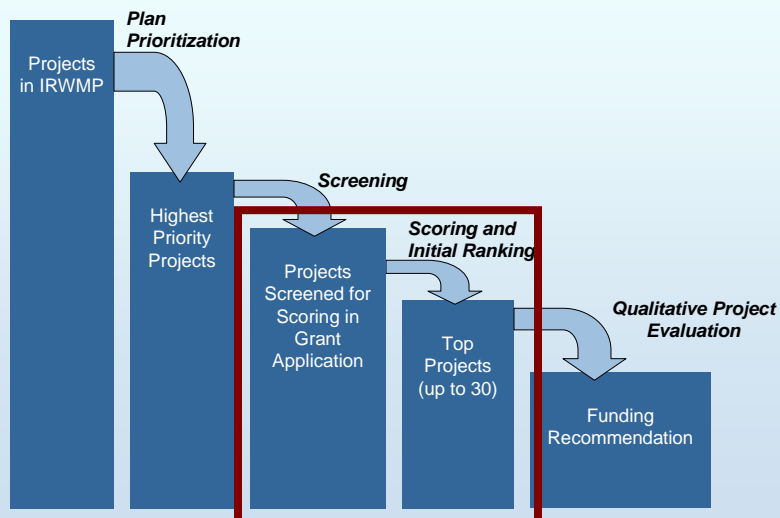
Screening Process



Projects Must Pass All Screening Criteria For Further Consideration

1. Request Consideration for Funding
2. Funding Match
 - Minimum of 10% funding match?
 - If no, does the project directly benefit a DAC?
3. Readiness to Proceed
 - Schedule start date (e.g. prior to June 2008)?
 - Documentation of feasibility?
4. Groundwater Management Plan status compliant with guidelines

Scoring and Ranking Process



35

RMC

Projects Receive Points for Addressing Scoring Criteria

1. Statewide Priorities
 - SWRCB and DWR highest priorities for funding
2. Program Preferences
 - Funding program goals and objectives
3. Region-wide Benefits
 - Regionally distributed benefits
4. Funding Match
 - Non-State cost share (can be in-kind)
5. Partnerships
 - Multiple agency/entity implementation partners
6. Linkages to Other Projects
 - Related to other projects through budget and/or schedule
7. Benefits to Disadvantaged Communities
 - Provide specific, targeted benefits to disadvantaged communities
8. Included in Existing Planning Documents
 - Project is cited in other planning document(s) such as watershed plans

36

Arkansas
Integrated Regional
Water Management

Scoring Criteria

Statewide Priorities

1. Reduce conflicts between water rights users
2. Implement TMDLs
3. Implement RWQCB's Watershed Management Initiatives
4. Implement SWRCB's NPS Pollution Plan
5. Assist in meeting Delta Water Quality Objectives
6. Implement recommendations of the floodplain, desalination, and recycling task forces, or of the state species recovery plan
7. Address environmental justice concerns
8. Assist in meeting the CALFED Bay-Delta Program goals
9. Reduce carbon emissions
10. Other (please specify)

37

RMC

Scoring Criteria

Program Preferences

1. Integrated projects with multiple benefits
2. Supports and improves local and regional water supply reliability
3. Contributes expeditiously and measurably to the long-term attainment and maintenance of water quality standards
4. Eliminates or significantly reduces pollution to impaired waters and sensitive habitat areas, including areas of special biological significance
5. Safe drinking water and water quality projects that serve disadvantaged communities
6. Groundwater management and recharge projects that are located 1) outside the service area of the Metropolitan Water District of Southern California; and 2) within one mile of established residential and commercial development

38

RMC

Scoring Criteria

Partnerships

- Involves more than one agency/organization

Linkages with Other Projects

- Linked to at least one other project

Benefits to Disadvantaged Communities

- Provides targeted benefits to disadvantaged communities

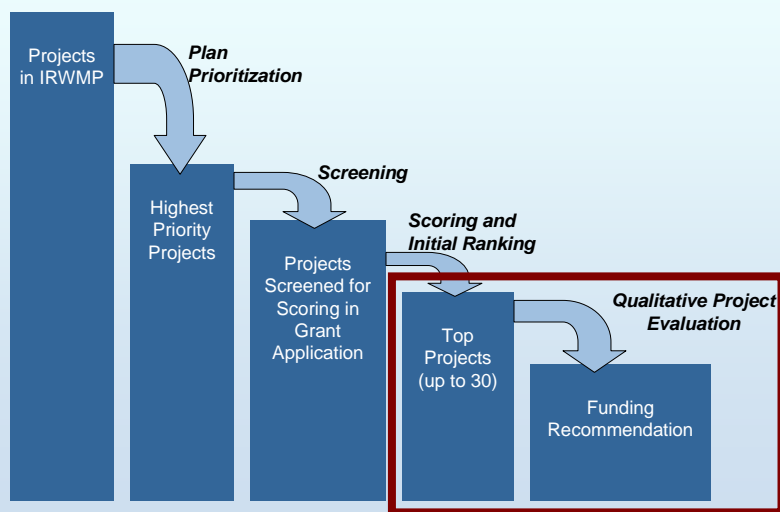
Included in Existing Plan

- Project is identified in existing plan (e.g., watershed plan)

39

RMC

Qualitative Project Evaluation Process



40

RMC

RAC Workgroup will Evaluate Projects Against Qualitative Criteria to Develop Final Funding Package

1. Contribution to quantifiable targets
 - Assists in meeting the region's measurable long-term targets
2. Cost-effectiveness
 - Provides more benefit for less cost
3. Downstream benefits
 - Yields additional downstream benefits
4. Increasing benefits over time
 - Allows other projects to move forward
5. Advances the planning process
 - Involves monitoring, addresses deficiencies in the region, fills data gaps, etc

41



RAC Workgroup will Evaluate Projects Against Qualitative Criteria to Develop Final Funding Package

7. Time sensitivity/urgency
 - Immediate need for project
8. Geographic distribution
 - Distribution of projects across the region
9. Funding request
 - Amount requested
10. Balance across types of projects
 - Variety of strategies employed
11. Balance across objectives
 - Variety of objectives addressed

42



Working Group will be Responsible for the Final Ranking and Funding Recommendations

- 1 representative from each of the RWMG agencies
- 1 representative from the Retail Water Entities
- 1 representative from the Natural Resources and Watersheds
- 1 representative from the Water Quality
- 2 representatives from the Members at Large

****Nominations for representatives are due at the next RAC meeting on May 16, 2007****

43

RMC

Questions?

44

San Joaquin
Integrated Regional
Water Management

Agenda

- Introductions
- Updates
- Comments on Administrative Draft IRWMP
- Review of IRWM Plan Prioritization
- Request for Additional Information
- Approach to Funding Application Prioritization
- **Public Comments**

45