

Water Supply Conditions and Regional Drought Response



Presentation by: Dana Frieauf
Acting Water Resources Manager

April 2, 2014
San Diego IRWM RAC Meeting



Agenda

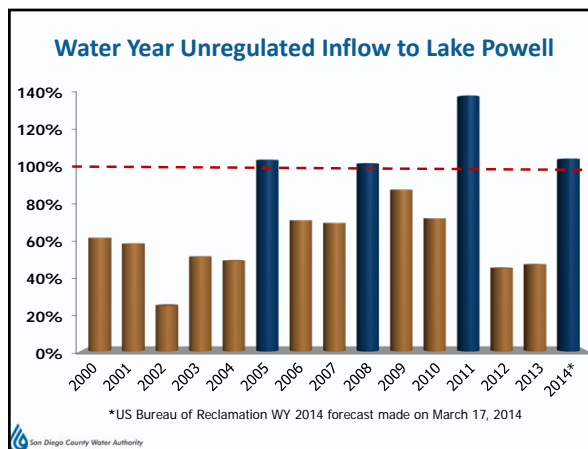
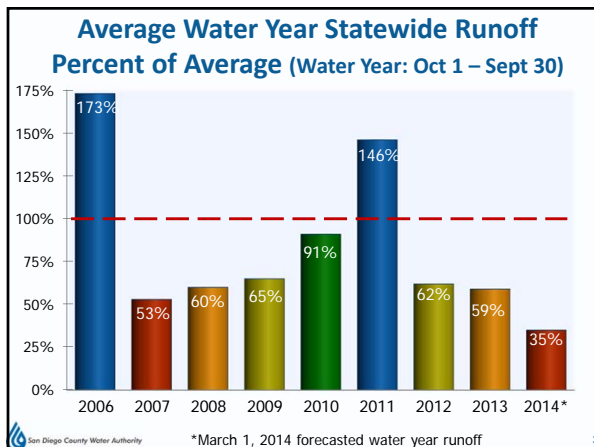
- Current drought conditions
- Investments in supply reliability
- Overview of regional conservation programs

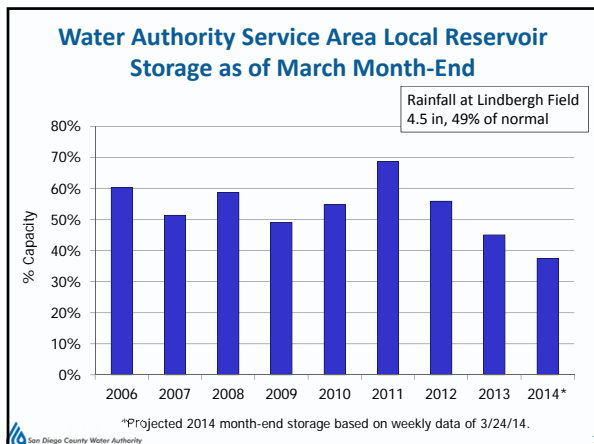
DWR April 1st manual snow survey



"Despite Storms, Snowpack Still Far Below Normal - Drought Retains Grip as Summer Approaches" DWR Press Release, 4/1/14

Snowpack water content only 32% of average statewide





Impacts due to Dry Conditions Vary Statewide

- Areas most impacted are those relying on a single watershed or source of supply
- Small rural drinking water communities
- Farming communities in the Central Valley
- Urban regions
 - For example, San Juan Water District is at Stage 3, 25% mandatory reductions
 - Rely only on Lake Folsom: currently 45% of capacity

San Diego Region Better Able to Manage Shortages due to Drought

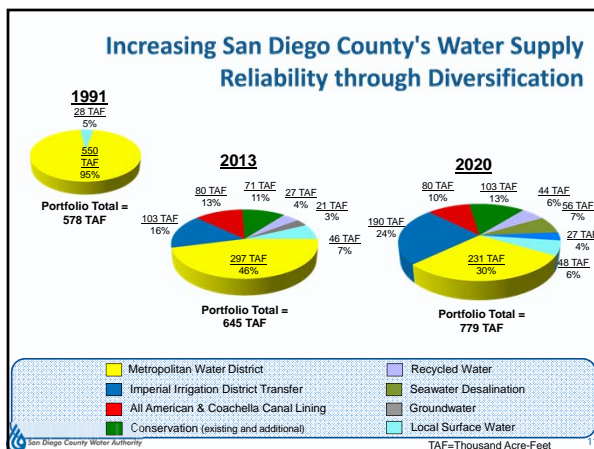
- Ratepayers investments and commitment to water conservation have reduced the region's vulnerability to drought
 - Diversification
 - Colorado River Transfers: 180,000 AF in 2013
 - Water Conservation
 - Water use down 24% since 2007
 - Regional Storage
 - Adequate storage reserves in southern California to help manage conditions
- No cutbacks expected for San Diego region in 2014

Lining the Coachella Canal

Metropolitan Water District Diamond Valley Lake

February 13, 2014 Water Authority Board Actions on Drought Response

- Activate the Water Authority's Water Shortage and Drought Response Plan, Voluntary Stage
- Declare a Regional Drought Response Level 1, Drought Watch condition
 - Eliminate wasteful water practices
 - Check with local water agency for specific measures
- Actions taken to reduce usage will help manage storage reserves and respond to Governor's drought declaration calling for conservation statewide



Carlsbad Desalination Project

- New, local, drought-proof water supply
- 50 mgd facility located adjacent to Encina Power Station in Carlsbad
- Public-private partnership between Water Authority and Poseidon Resources
- Construction approximately 30% complete
- Expected online in early 2016

Construction site of Carlsbad Desalination Facility

**Project: San Vicente Dam Raise
Construction Complete: Summer 2014**



Benefit: Increase reservoir capacity by 152,000 AF for emergency situations and drought shortage periods

Rebates and Resources for WaterSmart Living



Rebates



WaterSmartSD.org



Turf Replacement Program



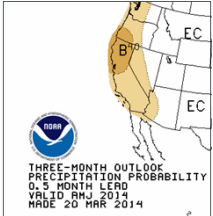
Online digital magazine

San Diego County Water Authority

Conclusion

- Continue to closely monitor supply and demand conditions
- Enhanced public outreach underway
 - Formal outreach campaign beginning in April
- Ratepayer investments in supply reliability have paid off
 - Region better able to manage shortages due to drought
- Critical that residents and businesses continue to use water wisely

**Precipitation Outlook
April – June 2014**



THREE-MONTH OUTLOOK
PRECIPITATION PROBABILITY
0.5 MONTH LEAD
VALID RMJ 2014
MADE 20 MAR 2014

San Diego County Water Authority