

San Diego Healthy Headwaters Restoration Project

Resource Conservation District of Greater San Diego County

Ann Baldrige
Executive Director
ann.baldrige@rcdsandiego.org



Project Overview

Local Project Sponsor: Resource Conservation District of Greater San Diego County

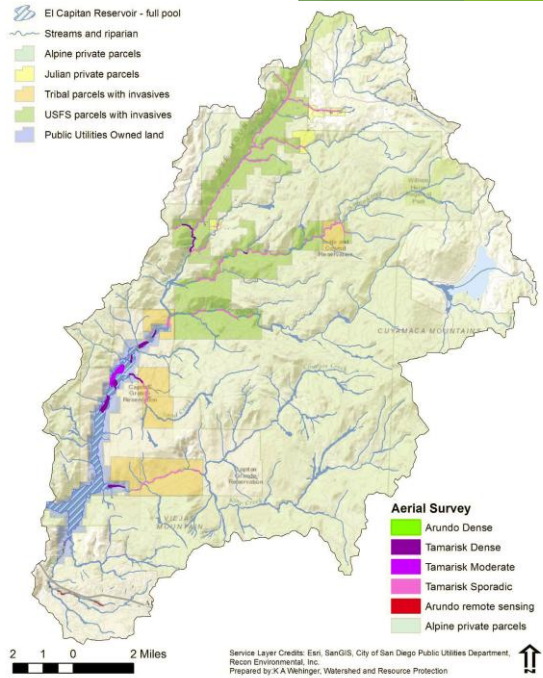
Funding source and amount:

- Total project cost: \$2,692,269
- Grant share: \$1,923,263.03
- Cost-share/match: \$7769,000

Goal: to enhance the riparian habitat within the El Capitan sub-catchment of the San Diego River



Project area



3



Project Partners

- ▶ US Forest Service
- ▶ Viejas Band of Kumeyaay Indians
- ▶ City of San Diego
- ▶ San Diego River Park Foundation
- ▶ Back Country Land Trust

4

Planned activities

Planned Activity	Target	Notes
Acres to be surveyed for invasive plants	4,702	Includes federal, tribal, city and private lands
Acres to be treated for invasive plants	35	1 stream mile = 6 acres of habitat
Native plants to be installed	1,500	Private land
Educational events to be conducted	28	Includes informational signs, public events, and town halls
Trail miles to be improved	10	Includes diverted trails
Animals to be managed	153	Feral pigs individuals and fish capture events

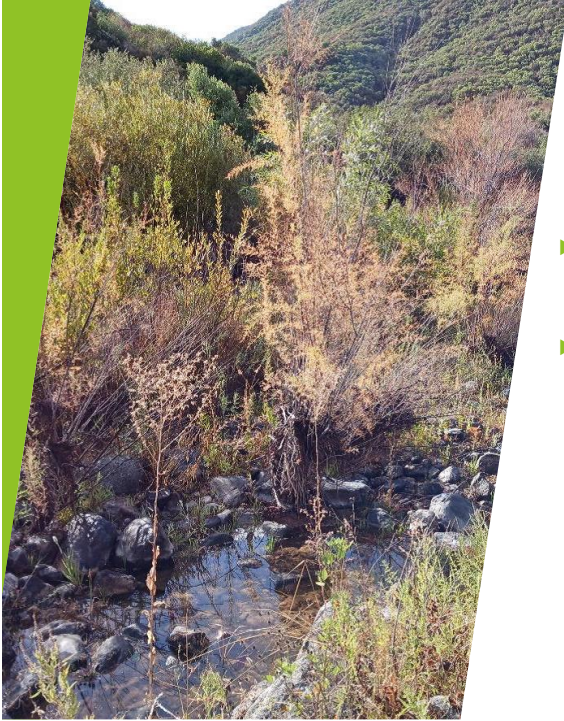
5



United States Forest Service: Cleveland National Forest

- ▶ Invasive plant treatment
- ▶ 10 miles of trail rehabilitation in Inaja, River Gorge, and
- ▶ Educational signage
- ▶ Interpretive tour signage
- ▶ Invasive animal control - eradication of feral pigs

6



Viejas Band of Kumeyaay Indians

- ▶ Assess and treat invasive species with the Capitan Grande Reservation
- ▶ Nursery development

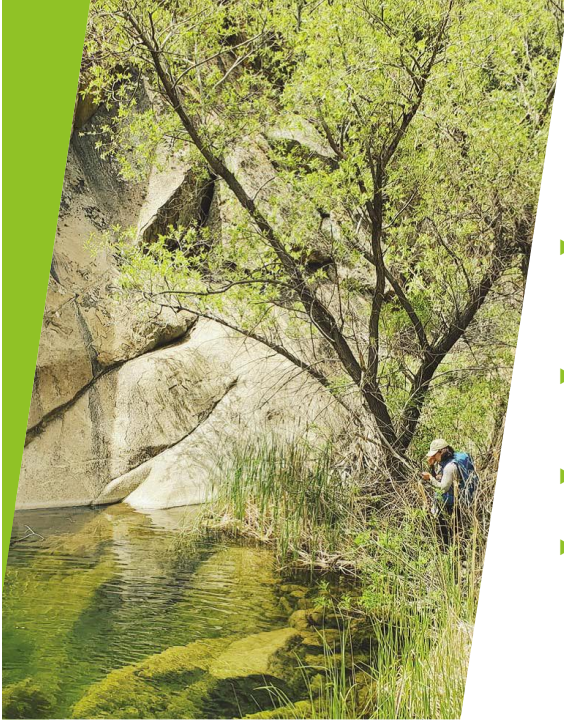
7



City of San Diego

- ▶ Assessed 11.4 acres of the El Capitan Reservoir and tributary creeks
- ▶ Treatment of invasive species
- ▶ GIS mapping of all treated areas
- ▶ Ariel monitoring

8



San Diego River Park Foundation

- ▶ Weed treatment and removal (Arundo and tamarisk) on 2.5 acres of inaccessible stream reaches and reservoir edges
- ▶ Led education and outreach efforts to private landowners in the upper watershed
- ▶ Developed outreach materials - brochures
- ▶ Engaged and training volunteers for monitoring some really hard to reach areas

9



10

Back Country Land Trust



- ▶ Weed treatment, removal of non-native plants, and restoration on private properties across 7 acres in Alpine
- ▶ Capacity building through purchases such as project equipment and insurance

11



Successes

- ▶ Project brought together a diverse group of partners
- ▶ Some partners exceeded expectations in their projects
- ▶ SDRPF exceeded expectations for outreach and engagement: successful at engaging and training volunteers on monitoring activities in remote areas
 - ▶ Volunteers trained to document invasive plants and species of concern such as southwestern pond turtle, CA newt, two-striped garter snake, and Pacific tree frog
- ▶ USFS leveraged additional funding and were able to surpass expected metrics on trail work and invasives management

12

Work Completed

Activity	Target	Achieved	Deviation	Deviation (%)	Notes
Acres surveyed	4,702	5,348	+646	14%	Includes federal, tribal, city & private lands
Acres treated	35	102	+67	193%	1 stream mile = 6 acres of habitat
Installed plants	1,500	1,355	-145	-10%	Private land accessibility issues; includes recruitment of native seed
Educational events	28	64	+36	129%	Informational signs, homeowner education, public events, town halls
Trail miles improved	10	20	+10	100%	Includes diverted trails
Animals managed	153	222	+69	45%	Feral pig individuals and fish capture events

13

Challenges



- ▶ Removal of invasives in remote and challenging terrain
- ▶ Accessing private properties for project activities

14



15



Ongoing activities

- ▶ **Viejas** - Resource Management Department continues to expand on the funded activities, e.g. built two additional greenhouses and continue to use the restoration site for engagement and education of tribal members
- ▶ **SD River Park Foundation** - continuing to enhance project sites, for example through collaborative restoration with an oak conservation consortium

16

