

Watershed Management Area Analysis Water Quality Equivalency and Alternative Compliance

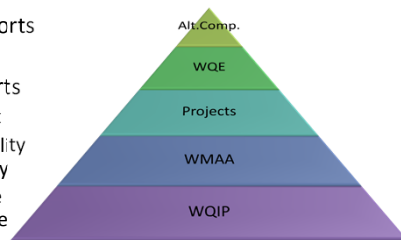


Presented by:
Christine A. Sloan
County of San Diego

12/04/13

Agenda

- Overview
- Regional Efforts
 - WMAA
- County Efforts
 - Project List
 - Water Quality Equivalency
 - Alternative Compliance
- IRWM role?

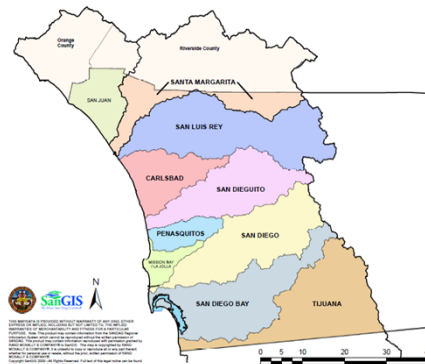


2013 Region 9 MS4 Permit

- Section E.3. Development Planning
 - More Priority Development Projects
 - Stricter Retention requirements
 - Stricter Hydromodification requirements (bigger BMPs)
 - Will drive the need for an Off-Site Alternative Compliance option

http://www.waterboards.ca.gov/sandiego/docs/2013-0523_Order_No_R9-2013-0001_COMPLETE.pdf

Watershed Management Areas



Regional Efforts

WATERSHED MANAGEMENT AREA ANALYSIS

Watershed Management Area Analysis

- (a): **GIS Mapping** of hydrologic process, existing streams, land uses, sediment yield areas, and location of flood control structures.
- (b): Use the results of (a) to compile **list of candidate projects** for alternative compliance
- (c): Use the results of (a) to identify areas in watershed where PDPs are **exempt** from HMP with supporting rationale.

Section B.3.b.(4)

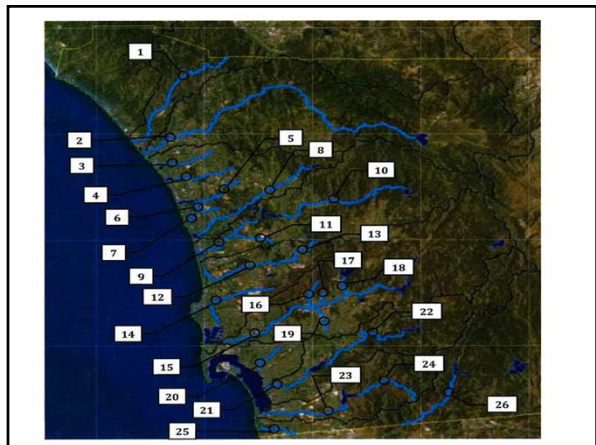
Regional Objective

- Provide regional WMAA for WQIPs
 - Develop (a) by building upon existing mapping and data
 - Develop (c) by conducting further analysis and providing justifications to support HMP exemptions
 - Develop template for (b) to provide jurisdictions/WQIPs a basis to identify candidate list of projects

Task 1: Mapping

B.3.b.(4)(a): GIS Mapping of:

1. Hydrologic process, i.e. infiltration or overland flow areas
2. Existing streams with descriptions
3. Current and anticipated future land uses
4. Potential coarse sediment yield areas
5. Location of existing flood control and channel structures



Task 2: Template

B.3.b.(4)(b): Candidate Project List:

- Develop a regional template that establishes a consistent format for watersheds/jurisdictions to generate candidate list of projects
- The template will be provided to the Copermittees for each watershed in December 2013

Potential Projects

- Stream rehabilitation
- Retrofitting existing infrastructure to incorporate storm water retention or treatment
- Regional BMPs
- Groundwater recharge projects
- Water supply augmentation projects
- Land purchases to preserve floodplains

Section B.3.b.(4)(b)

WMAA Schedule

Task Name	2013			2014												
	Jul	Aug	Sep	Oct	Nov	Dec	Jan	Feb	Mar	Apr	May	Jun	Jul	Aug	Sep	
Task 1 Mapping																
Data Call																
Mapping																
Task 2 Project Template																
Create Template																
Template to WMAAs																
Task 3 HMP Exemptions																
Exemption support																
GIS & Docs to WMAAs																
FY14-15 Task Equivalency																

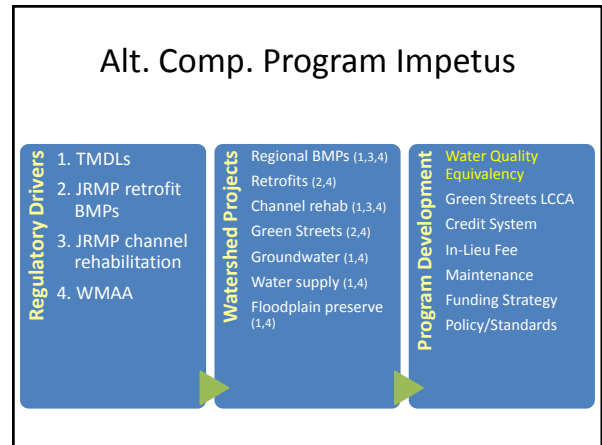
County Efforts

ALTERNATIVE COMPLIANCE PROGRAM DEVELOPMENT

- ### Regulatory Drivers
- Total Maximum Daily Load (TMDL)
 - Jurisdictional BMP retrofits
 - Jurisdictional channel/habitat rehabilitation
 - Watershed Management Area Analysis (WMAA)
- http://www.waterboards.ca.gov/sandiego/docs/2013-0523_Order_No._R9-2013-0001_COMPLETE.pdf

County TMDLs

Pollutant	Watershed	Location
Total Nitrogen	Santa Margarita	Rainbow Creek
Total Phosphorus	Santa Margarita	Rainbow Creek
Bacteria	San Luis Rey	San Luis Rey River mouth
Bacteria	Carlsbad	Monnlight State Beach
Bacteria	San Dieguito	San Dieguito Lagoon mouth
Bacteria	Penasquitos	Torrey Pines State Beach
Bacteria	San Diego River	Forrester Creek lower mile San Diego River lower 6 miles San Diego River mouth Dog Beach
Bacteria	San Diego Bay	Chollas Creek lower 1.2 miles
Copper	San Diego Bay	Chollas Creek
Lead	San Diego Bay	Chollas Creek
Zinc	San Diego Bay	Chollas Creek
Diazinon	San Diego Bay	Chollas Creek

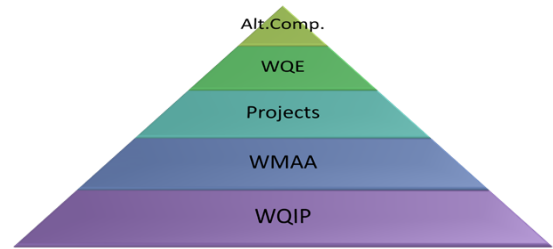


- ### Water Quality Equivalency
- Objective**
- Create process to evaluate if a candidate project has a greater water quality benefit
- Tasks**
- Research model programs
 - Form Technical Advisory Committee
 - Propose equivalency evaluation
-

IRWM Role?

- WMAA Data call
- Call for Projects
- Urban Water Purveyor for WQE TAC
- Exploration of a Regional Project Database?

Thank You



Christine A. Sloan, MS, CPESC, QSD | San Diego County Watershed Protection Program
Christine.Sloan@sdcounty.ca.gov | (858)495-5257

Process Hierarchy

