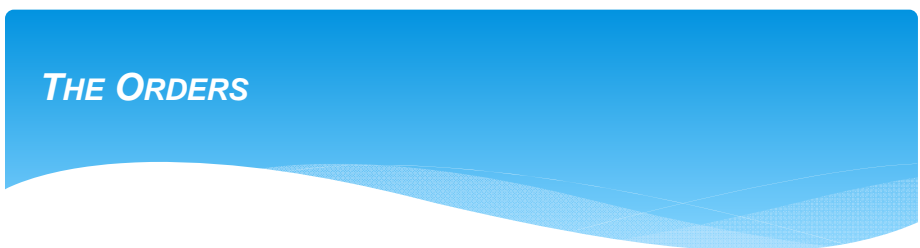




**General Waste Discharge Requirements for the
Commercial Agricultural Operations Regulatory
Program**

June 7, 2017
San Diego Regional Water Quality Control Board

1 6/7/2017



THE ORDERS

Order No. R9-2016-0004, *General Waste Discharge Requirements for Discharges from Commercial Agricultural Operations for Dischargers that are Members of a Third-Party Group in the San Diego Region*
(Third-Party General Order)

Order No. R9-2016-0005, *General Waste Discharge Requirements for Discharges from Commercial Agricultural Operations for Dischargers Not Participating in a Third-Party Group in the San Diego Region*
(Individual General Order)

2 6/7/2017

THE REQUIREMENTS

Use effective management practices (aka BMPs) to minimize or prevent the discharge of wastes to surface water and groundwater

- Water Quality Protection Plan (WQPP) ←
- Education
- Monitoring and reporting
- Feedback mechanism (WQRP) —

3

6/7/2017

COMMERCIAL AGRICULTURAL OPERATION

Any agricultural business that produces crops with the intent to make a profit.

- IRS Guidance
- Agricultural Water Rates or Variance
- Pesticide Use Reporting Identification Number/Permit Number

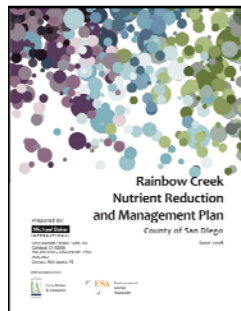


4

6/7/2017

TOTAL MAXIMUM DAILY LOADS

- Adopted TMDLs
 - Load Allocations
 - Numeric Targets
 - Implementation Plans
- Future TMDLs, TMDL Amendments, TMDL Alternatives



WATER QUALITY BENCHMARKS

Parameter	Units	Water Quality Benchmark
pH	standard units	Note 1
Temperature	°C	Note 1
Dissolved Oxygen	mg/L	Note 1
Turbidity	NTU	Note 2
Total Dissolved Solids	mg/L	Note 2
Total Suspended Solids	mg/L	Note 1
Ammonia	mg/L	0.025, Note 1
Nitrate (as NO ₃)	mg/L	45, Note 3
Nitrate (as NO ₃) - Groundwater	mg/L	36/45, see section III. C of this MRP.
Nitrate + Nitrite (as Nitrogen)	mg/L	10, Notes 3 and 4
Nitrite (as Nitrogen)	mg/L	1.0 Note 3
Total Nitrogen	mg/L	1.0, Notes 1 and 4
Total Phosphorus	mg/L	0.1, Notes 1 and 4
Sulfate	mg/L	Note 2
E. coli	MPN/100 mL	Note 1
Enterococci	MPN/100 mL	Notes 1 and 5
Fecal Coliform	MPN/100 mL	Notes 1 and 5
Total Coliform	MPN/100 mL	Notes 1 and 5
Chronic Toxicity	TUc	1.0, Note 6

SURFACE WATER AND GROUNDWATER MONITORING PROGRAM



7

6/7/2017

CORE MONITORING – MONITORING QUESTIONS

- How effective are the management practices at preventing or reducing discharge of wastes from the Members' Agricultural Operations that are causing or contributing to exceedances of applicable water quality standards in surface water and groundwater?
- What effect, if any, have the Members' Agricultural Operations had on surface water and groundwater quality?

8

6/7/2017

CORE MONITORING – SURFACE WATER MONITORING PARAMETERS

- Once during dry season, once during wet season
- Monitoring parameters
 - Nutrients
 - Bacteria
 - Chronic Toxicity
 - General Chemistry: DO, TSS, TDS, pH, Temperature
 - Stream Characteristics: Cross sectional area, flow, velocity



9

6/7/2017

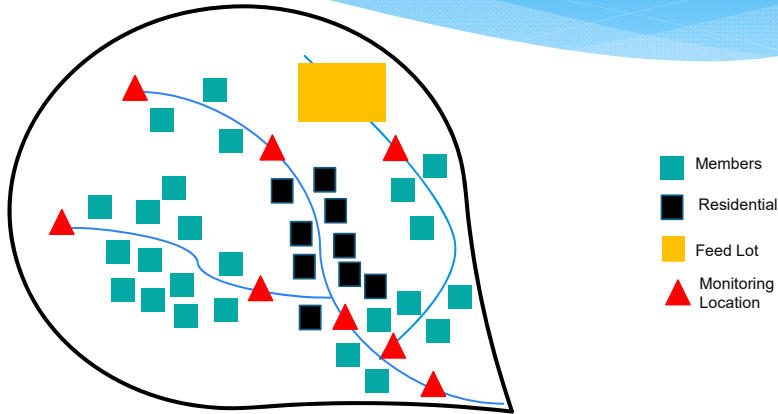
CORE MONITORING – SURFACE WATER MONITORING LOCATIONS

- Surface water that directly or indirectly receives discharges from Member's agricultural operations
- Sufficient spatial density or distribution
- Sub-watershed level
- Readily accessible
- Wadeable streams

10

6/7/2017

CORE MONITORING SURFACE WATER MONITORING LOCATIONS



11

6/7/2017

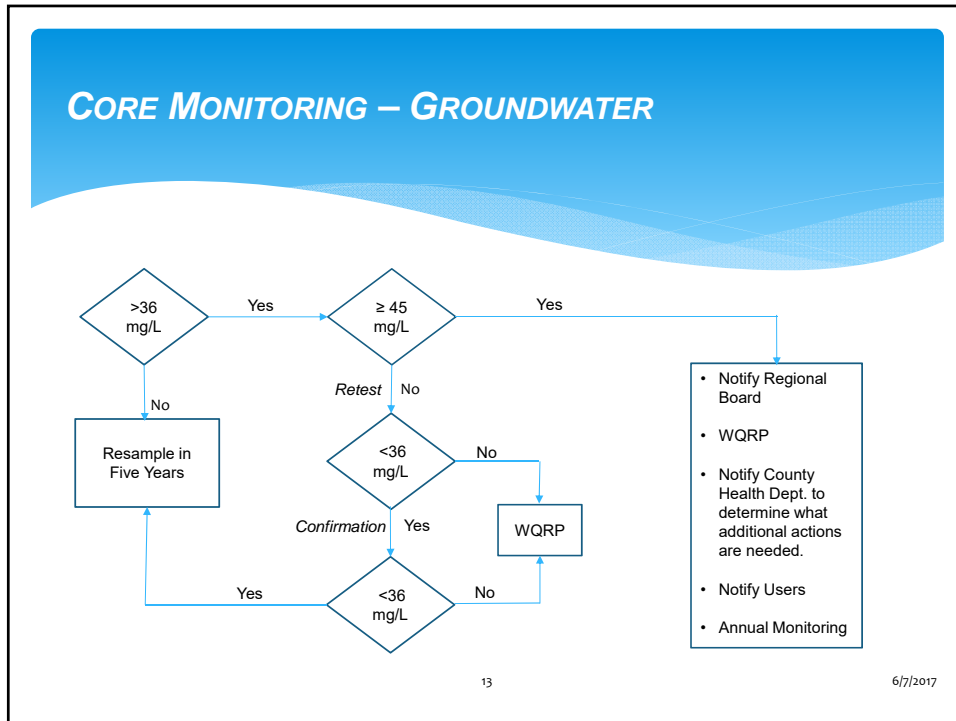
CORE MONITORING – GROUNDWATER

- Existing drinking water supply wells
- Nitrates (as NO_3)
- Water Quality Benchmark (36 mg/L)
- Maximum Contaminate Level (45 mg/L)



12

6/7/2017



REGIONAL MONITORING – THIRD-PARTY GROUP

- What effect, if any, have the Members’ Agricultural Operations collectively had on regional surface water quality?
- Are waterbody conditions in the areas with commercial agriculture in the San Diego Region getting better or worse?

14

6/7/2017

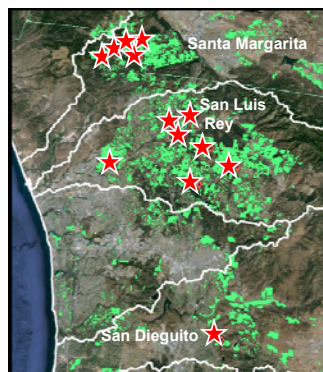
REGIONAL MONITORING – THIRD-PARTY GROUP MONITORING PARAMETERS

- Every five years, once in wet season, once in dry season
- Bioassessment monitoring
- Physical Habitat
- Nutrients
- General chemistry

15

6/7/2017

REGIONAL MONITORING – THIRD-PARTY GROUP MONITORING LOCATIONS



- Southern California Storm Water Monitoring Coalition (SMC)
- Identified 13 SMC sites

16

6/7/2017

HOW WILL THE MONITORING DATA BE USED?

- Upload to CEDEN
- Amend Monitoring Plan
- Compare to Water Quality Benchmarks
- Water Quality Restoration Plan



17

6/7/2017

WATER QUALITY RESTORATION PLAN

- Required when:
 - Surface water monitoring benchmark is exceeded 3 out of 4 monitoring events
 - The nitrate monitoring benchmark for groundwater is exceeded
 - When directed by the San Diego Water Board
- Includes:
 - Source identification
 - Actions to be taken
 - Monitoring activities

18

6/7/2017

THE REQUIREMENTS

Use effective management practices (aka BMPs) to minimize or prevent the discharge of wastes to surface water and groundwater

- Water Quality Protection Plan (WQPP) ←
- Education
- Monitoring and reporting
- Feedback mechanism (WQRP) →

HOW TO KEEP UP TO DATE

San Diego Regional Water Quality Control Board (9) - Email List Subscription Form

☑ Become a member of one or more of our email lists, and receive periodic announcements and updates by email.

1. Provide your email address and name, below.
2. Select one or more email list(s) and check the box next to your selection(s).
3. Click on the "subscribe" button located at the upper right hand corner.
4. An email notice will be sent to you for each selection. Please respond to each message(s) to confirm your membership.

Email Address: (required)

Subscribe

Your Full Name: (required)
(e.g. John Smith)

Special Topics

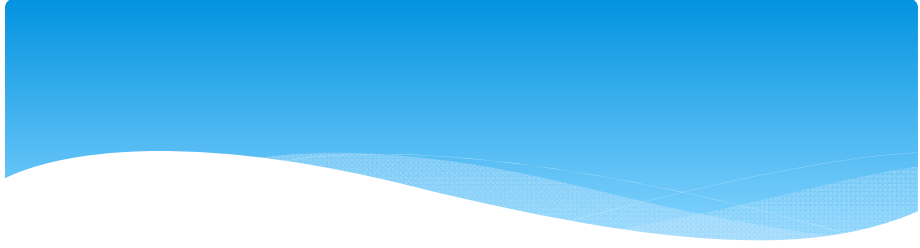
- Board Meetings
- 401 Certification Program
- Agriculture and Nurseries ←
- Basin Planning Issues
- BF Goodrich Aerostructures
- Biological Objectives for the San Diego Region
- Boulevard General NPDES Permit



- Agriculture
- Executive Officer's Reports
- Sanitary Sewer Overflows
- 401/402
- Monitoring and Assessment
- Storm Water
- Drought - Reducing Water
- Permit, Waters, Farms
- Spanish River Valley Recovery Strategy
- Enforcement
- Practical Vision
- TMDL
- Environmental Projects
- Public Hearing Notice
- 401 Certifications
- More...

Emergency Water Conservation Regulations Portal

- ANNOUNCEMENTS
- Tentative Addendum No. 1 to CAD 93-2010-0122 for James V. Pile & Phone Avenue Gasport Center, Inc. (11/03/16) (11/03/16)
 - Final Report on Public Debate in San Diego Bay (11/03/16)
 - Notices of Proposed No Further Action (11/03/16)
 - New "2016 Community Outreach Strategy" (11/03/16)
 - Resolution Entering "2016 Community Outreach Strategy", Resolution No. 93-2016-0200 (11/03/16)
 - More Announcements...



For additional information please contact:
Barry.Pulver@waterboards.ca.gov
(619) 521-3381

21

6/7/2017