

San Diego Regional Storm Water Resource Plan Overview

Ruth de la Rosa
County of San Diego
Department of Public Works

Storm Water Resource Plan (SWRP)

- Required as a condition of receiving Prop 1 grant funds (SB 985)
- State Water Board SWRP Guidelines adopted December 15, 2015
- Not a compliance document
- Identifies and prioritizes multi-benefit projects that can best meet the priorities on a watershed basis

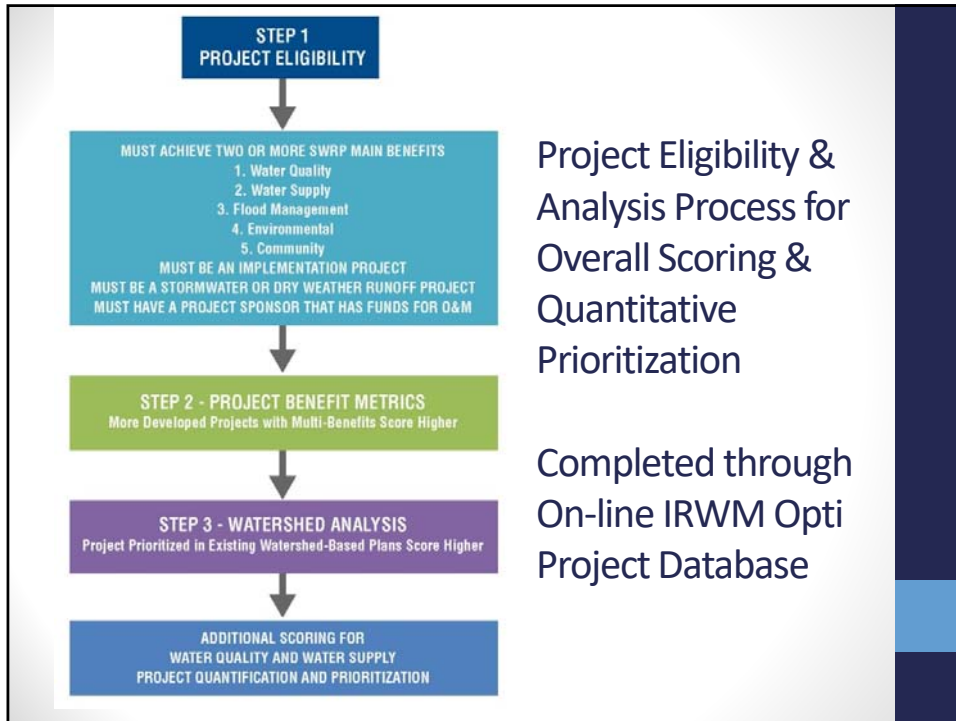
San Diego Regional SWRP

- “Functional Equivalent plan”
- Identifies priorities on a watershed basis
- Allows for consistency throughout the region
- Provides guidance on developing more competitive projects

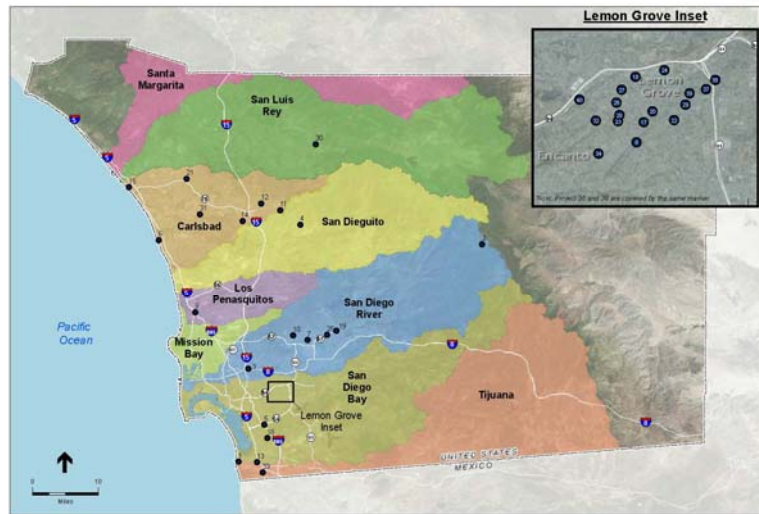


What is contained in the San Diego Regional SWRP?

- Watershed characteristics and water quality priorities
- Tools for regional and watershed collaboration to develop integrated multi-benefit stormwater projects
- Project Checklist and Worksheets
- Prioritization process accessed through IRWM Opti Project Database
- Additional tools – storm water capture & beneficial use & restoration opportunities, parcel assessment & maps



Current Projects

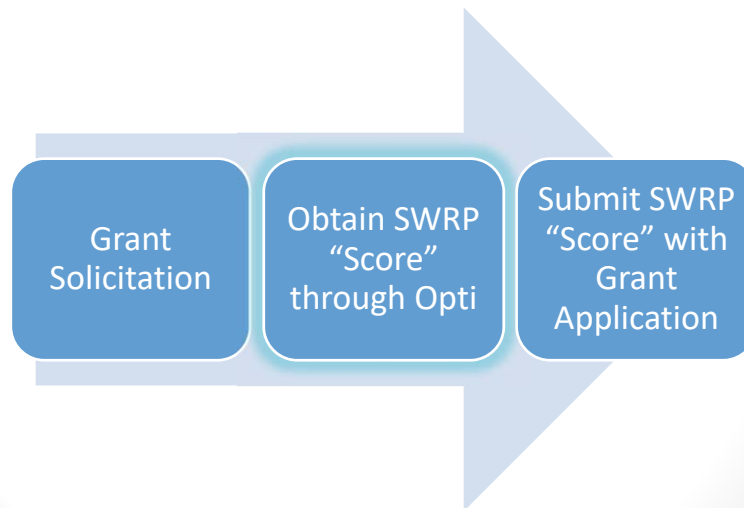


SOURCE: ESRI, 2016; SANDIS, 2016

SWRP - 160616

Figure E-1
San Diego Region SWRP Project Locations

Grant Application Process



Links

San Diego Regional Storm Water Resource Plan

<http://www.sdirwmp.org/irwm-planning>

SDIRWM Opti Project Database

<http://irwm.rmcwater.com/sd/login.php>

SWRCB's Storm Water Grant Program

http://www.waterboards.ca.gov/water_issues/programs/grants_loans/swgp/prop1/

Questions?

