

Water Seen As A Problem: Pipe, Pave and Pollute.
Urban Runoff Is #1 Source of Ocean Pollution

DID YOU KNOW THAT THIS:

CAN CONTRIBUTE TO THIS:

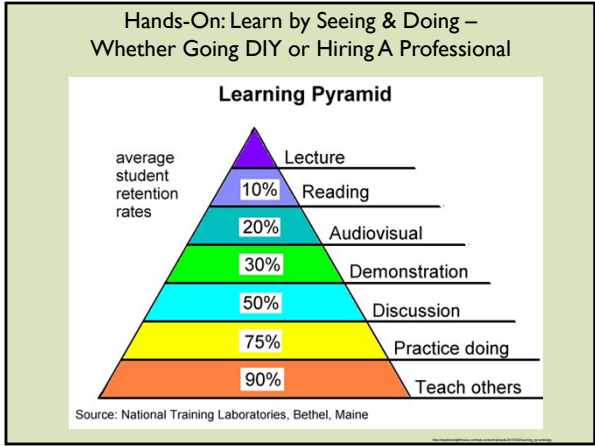
Flooding, Road Wear & Pollutants
Car oil
Metals
Pesticides
Nutrients
Sediment
Bacteria

Resource: Conservation District Santa Cruz



Properties Act Like A Sponge and Filter

- ① Reduces Supplemental Water
- ② Recharges Local Ground Water
- ③ Prevents Pollution and Flooding
- ④ Create Habitat and Beauty (& Food)



OFG Tools

Sign & Criteria – meets MS4 & WELO regs

Website

Book

Map

OFG Program Components



Watershed Basics Class



Hands-On Workshops (HOWs)







Garden Assistance Party




Lawn Patrol: Neighborhood Walk

OFG Partners In San Diego County


Water Supply & Water Quality Agencies



Community Groups and Associations



Private Sector Coaching



Case Study 1: Under \$5,000. Homeowner Does A Lot Of The Work.



He started sheet mulching, but didn't know to aerate the

Volunteers At Garden Assistance Party (GAP)



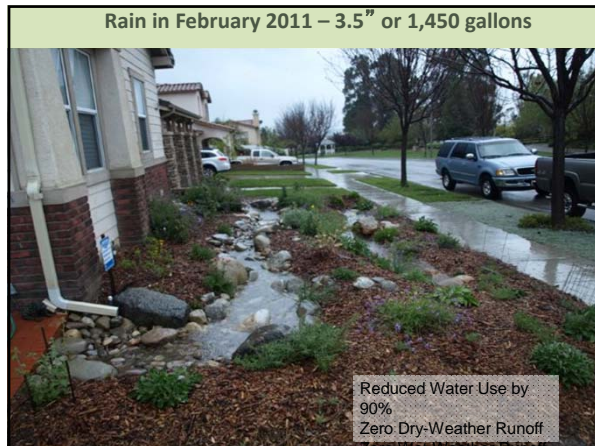
Installing Drip Irrigation



But The Proof of the Sponge Is In The Rain It Holds
December 2010 – 4" or 1,600 gallons



Creating Contours And Low Spots to SPREAD and SINK



Surfrider Seeks Out Media And Volunteers

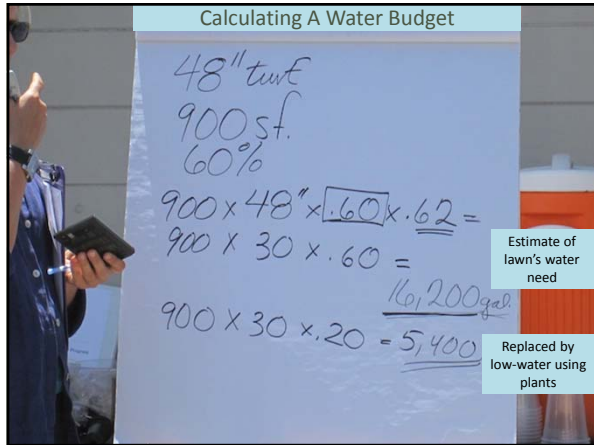


#2: La Jolla – Pros Do Design & Part Of Install. \$25,000



Evaluate Your Site

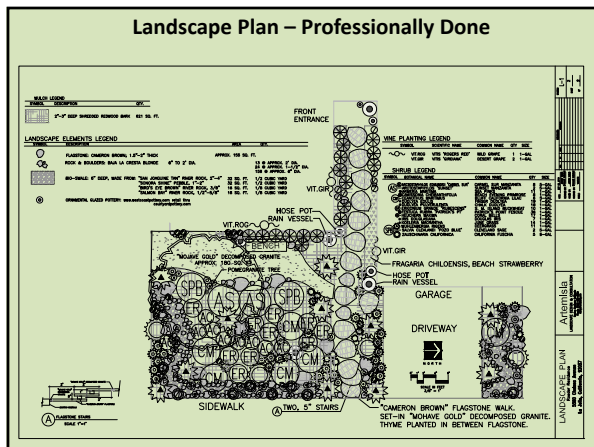
Calculating A Water Budget



$$\begin{aligned}
 &1 \times 748 \text{ gal.} \\
 &24 \times 748 = 18,000 / \text{mo.} \\
 &1'' = .625 \text{ gal.} \\
 &1'' \text{ on } 1000 = 625 \text{ gal.} \\
 &1450 \text{ sf. roof} \\
 &\quad \frac{1}{2} \text{ captured} = \\
 &725 \text{ sf} = 450 \text{ gal} / 1'' \text{ rain} \\
 &11 \times 450 = 4,950 \text{ gal.}
 \end{aligned}$$

Roof runoff could meet water needs of low-water-using landscape!

Landscape Plan – Professionally Done



Homeowner Invited Friends To Party + Surfrider Volunteers











**G3-Developed Guide:
G3 Also Creating Guidelines for
Sustainable Landscapes Project (SLP)**

G3 green gardens group

The Drought Tolerant Garden
LOS ANGELES COUNTY HANDBOOK

table of contents

- Introduction 2
- Site Plan & Plant Design 4
- Site Sections
 - front yard 6
 - side yard 10
 - backyard 12
- LA Climate Zone Map 14
- Plant Lists by Zone 16
- How-To Section
 - get to know your garden 20
 - prepare the soil 30
 - build healthy soil 34
 - plant and mulch 38
 - water wisely 42
 - weed your garden 46

(Linked at OFG webpage)

G3 Professional Training To Teach, Consult, Coordinate

Core Concepts Workshop –
Core Competency (Site Evaluation)

Intensive – Certified Professional

Communications Workshop –
Qualified Trainer (who teach the MWD California Friendly Landscape Training, or CFLT)

California Urban Water Conservation Council's new norm for landscaping is a **Watershed Approach**

G3 green gardens group Huntington Beach, CA
January 2012

Core Concepts Workshop

education consulting design community

Local Project Participants

Local Match Contributions (\$350,000)

 \$86,000	 \$77,250	 San Diego County Water Authority \$72,500
 SURFRIDER FOUNDATION \$64,000	 ASSOCIATION OF COMPOST PRODUCERS \$25,250	 CALIFORNIA AMERICAN WATER \$25,000

San Diego County Water Authority

7

Scope of Work

water smart LANDSCAPE

- Landscape guidelines (to integrate water efficiency & watershed protection)
- Education & training
- Technical assistance
- Retrofit incentives
- Landscape materials
- Outreach & stakeholder involvement

San Diego County Water Authority

8

SURFRIDER FOUNDATION
SAN DIEGO COUNTY CHAPTER:

Surfrider Foundation-San Diego Chapter
Julia Chunn-Heer, Policy Manager:
julia@surfridersd.org
OFG Committee Co-Chairs:
Shauna McKellar shauna@surfridersd.org
Susan Krzywicki skrzywicki@cnps.org

OCEAN FRIENDLY GARDENS

Paul Herzog
Surfrider Foundation
Ocean Friendly Gardens Program
National Coordinator
phertzog@surfrider.org

G3 green gardens group

Diane Downey
San Diego Regional Coordinator
dianed@greengardensgroup.com