

## City of San Diego Climate Mitigation and Adaptation Plan (Climate MAP)

- Overview of Framework
- Proposed Schedule
- Environmental and Economic Sustainability Taskforce

A community that is Prepared is a Community that is Resilient

---

---

---

---

---

---

---

---

## Overview of Framework

- ❖ Co-Benefits: Risk Assessment, Infrastructure Planning, Public Safety Projections (examples-fires, heat waves), Resource Management.
- ❖ GHG Emissions vs. population
- ❖ Changes in the new plan-
  - 1) Continue to review GHG emissions from city operations and the community
  - 2) Add a more robust community component through greater community participation
  - 3) Add adaptation as a major component of the Plan

---

---

---

---

---

---

---

---

## What Gets Measured Gets Done Changes Between 1990 and 2004

### COMMUNITY

- Population increase 16%
- GHG emissions increase 30%

### CITY of SAN DIEGO OPERATIONS

- More Treating and Pumping of Water and Sewage
- More Streetlights
- More Trash to Manage (methane)
- More Computer Servers
- More Vehicles

---

---

---

---

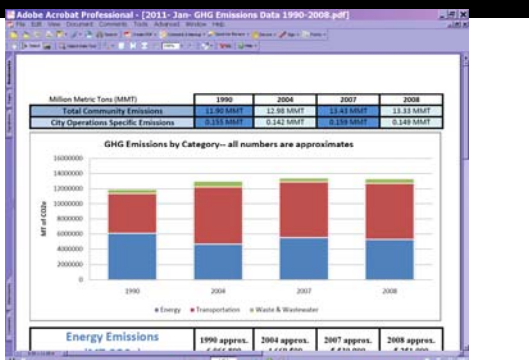
---

---

---

---

### Comparison of GHG Emissions In Three Sectors- energy, transportation, wastewater and landfills




---

---

---

---

---

---

---

---

---

---

### Environmental and Economic Sustainability Task Force (EESTF)

Name	Representing
<b>TASK FORCE MEMBERS</b>	
Diane Coombs	Dist 1 - CM Lightner
Landry Watson	Dist 2 - CM Faulconer
Nicole Capretz	Dist 3 - CM Gloria
Nicola Hedge	Dist 4 - CM Young
Doug Smith	Dist 5 - CM DeMalo
Bill Powers	Dist 6 - CM Frye/ Zapf
Elyse Lowe	Dist 7 - CM Emerald
Anchi Mei	Dist 8 - CM Alvarez
Dr. D. Bart Chadwick	Mayor Sanders

---

---

---

---

---

---

---

---

---

---

### Proposed Schedule

- Environmental and Economic Sustainability Taskforce (EESTF) meeting every 3 weeks
  - 12-Month Process, beginning in January 2011
- Discussions with Community Groups
  - 2-Month Process beginning in September 2011 (overlaps with EESTF)
- Draft Plan available for Council Committee Review
  - November 2011
- Final Plan available for Council Approval-
  - December 2011

---

---

---

---

---

---



---

---

---

---

**Risk Management--  
How sure do we have to be?**

**SAN DIEGO REGIONAL  
FIRE PREVENTION AND  
EMERGENCY  
PREPAREDNESS  
TASK FORCE**

- The San Diego Regional Emergency Preparedness Task Force was established to identify how our community could better prepare and respond to all risk hazards that our region could be subjected to.

---

---

---

---

---

---

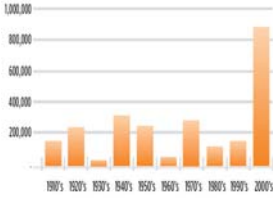
---

---

**Resilient San Diego  
Plan, Prepare, Be Informed**

- **Cool Zones & Energy Conservation**

City of San Diego offers relief at its [36 Public Libraries](#) and [57 recreation centers](#) and adjacent parks located throughout the city. For information on locations, hours and activities, please call the City of San Diego Public Library Public Information Line at (619) 236-5800.



**More Frequent, Intense Wildfires**

Total acreage historically burned by wildfires in San Diego County

---

---

---

---

---

---

---

---

**The CMAP will include measures that require  
action by all sectors of the community**

- Mitigation measures will include:
  - Implementation recommendations;
  - Projected reduction in GHG emissions;
  - Cost-benefit analysis (for most, not all)
  - Targets that are tracked in an annual Monitoring Report
- Adaptation recommendations- more general
  - Example: Increasing the capacity for a storm drain system in Mission Beach to reduce flooding

---

---

---

---

---

---

---

---

**Add support to many existing policies, and add more measures**

- Possible mechanisms to significantly increase the energy audits of existing homes, such as point of sale;
- Identify new codes and standards that will move the City toward the goal of Net Zero in residential homes by 2020;
- More parking management/parking meters on public streets;
- Reduce Urban Heat Island Effect- Design new development standards to reduce urban heat island effects, including cool roofs, permeable pavement, and cool pavement; and
- Adopt and implement a comprehensive set of City food system policies to increase local food cultivation and improve distribution within the San Diego community.

---

---

---

---

---

---

---

---

**Add support to many existing policies, and add examples of Adaptation...**

- Work with the San Diego Integrated Regional Water Management (IRWM) program to capture GHG reductions and review adaptation recommendations;
- Compare current Land Development Codes with climate vulnerability assessment and decide on recommended updates. (e.g. coastal water level increase; public health concerns; drought; wild fires; etc.);
- Develop a Sea Level Rise Strategic Plan, with milestones to be tracked in the Climate MAP Monitoring Report; and
- Review and Update Flood Data and compare with CalTrans and others for Risk Management and Infrastructure decisions.

---

---

---


---

---

---

---


---



**Public Opinions on Climate Change**  
 Key Findings from A Countywide Voters Survey, August 10-18, 2010  
 Conducted by Fairbanks, Maslin, Maulin, Metz & Associates – FM3

A strong majority of voters believe that a strong economy and a clean environment are compatible.

Agree 77%      Disagree 18%



*We can have a clean environment and a strong economy at the same time without having to choose one over the other*

---

---

---

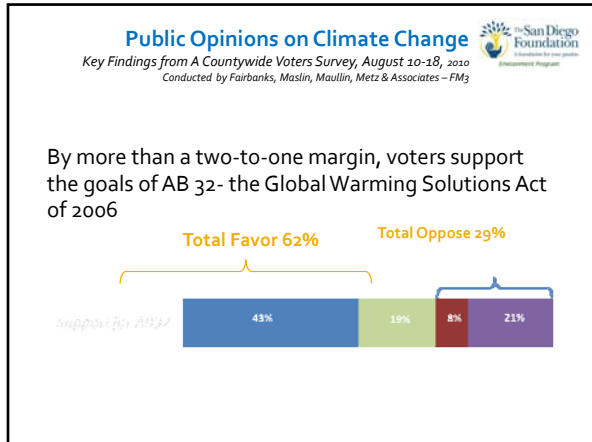
---

---

---

---

---



---

---

---

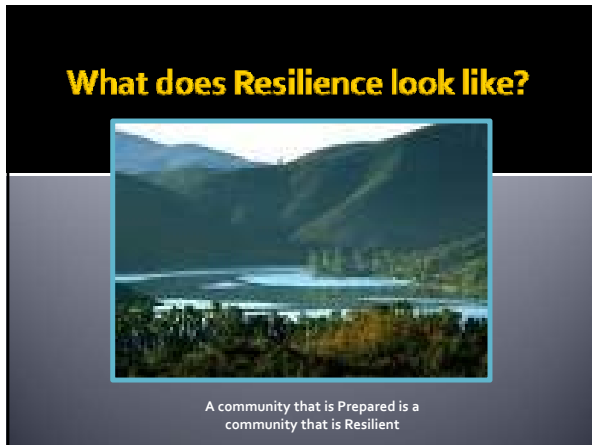
---

---

---

---

---



---

---

---

---

---

---

---

---

**For more information...**

Linda Giannelli Pratt  
[Lpratt@sandiego.gov](mailto:Lpratt@sandiego.gov)

Sustainability Website  
<http://www.sandiego.gov/environmental-services/sustainable/index.shtml>

---

---

---

---

---

---

---

---